

NAILSTYLE[®]

THE
INDUSTRY
STANDARD

HOLIDAY/WINTER 2019



gelish[®]

MORGAN
TAYLOR[®]
Professional Nail Lacquer

THE MOST festive



time of year is officially here! The Holiday season is one of my favorites simply because of all the traditions that it brings with it. Whether it's spending time with family, exchanging gifts with friends, or anything in between, traditions are important. As another year comes to a close, I would like to personally thank everyone who has made us a part of their traditions. The continued success of Gelish and Morgan Taylor are due to the loyalty of all of the amazing nail technicians who support the brands and continue to buy our new colors and launches. I am especially grateful to this industry that I have loved for so many years for continuing to support my dream of making products that make the lives of nail techs better. So as we carry on into the New Year, let's all make it an even better one than the last!

DANNY HAILE
Founder/CEO, Hand & Nail Harmony

cover

NAIL ART Vu Nguyen
PHOTOS Lindsey Karmopp
MODEL Lani Baker for LA Models
BEAUTY Kelly Shew
STYLE Jordan Grossman
SET Ava Jones



DANNY HAILE CEO & FOUNDER DAVID DANIEL PRESIDENT
GARI-DAWN TINGLER VICE PRESIDENT DAVID TROCKER CHIEF MARKETING OFFICER

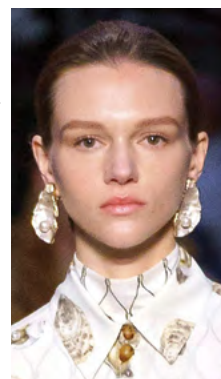
© 2019 NAIL ALLIANCE BREA, CA 92821 - GELISH AND HAND & NAIL HARMONY ARE REGISTERED TRADEMARKS OF HAND & NAIL HARMONY, INC. HM-1203

a toast to midnight magic

Midnight celebrations call for magical shades! Capture all the shimmer, the coziness, and the glow of the holiday-and-winter season with the Champagne & Moonbeams Collection from Gelish and Morgan Taylor. Accessorize with the runway's must-have jewelry pieces for starlit style. Light a spark-le.

Pearl Whirl

Unexpected ways to go lustrous. Give it a whirl. COLORS: Tell Her She's Stellar, Let There Be Moonlight



Think Links

Pile on the chains, the charms, the enchantment. All that glitters. COLORS: Gilded In Gold, Copper Dream



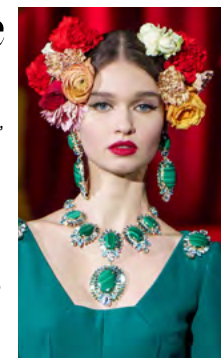
Ear-ring in the New Year

Long, slinky, modern. A fresh new resolution. COLORS: A Starry Sight, From Dusk Til Dawn



Set the Mood

Matching sets, maximum wow. The more, the merrier. COLORS: Shooting Star, Walking On Stardust



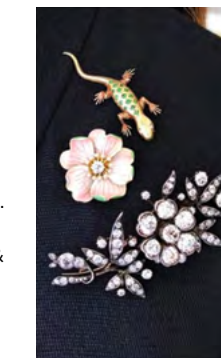
Tress Like an Hair-ess

Jeweled barrettes and bands for rich-girl hair. Crowning glory. COLORS: See You In My Dreams, Sprinkle Of Twinkle



Brooch the Subject

Singular sensations or marvelous motifs. Pin worthy. COLORS: Dancing & Romancing, A Kiss In The Dark



Champagne & Moonbeams

Introducing the Gelish & Morgan Taylor **Champagne & Moonbeams** collection. The collection takes the glitz and glam of the Holiday/Winter season and balances it against subdued neutrals in stunning hues of pink, nude and mauve.





FROM DUSK
TIL DAWN

TELL HER
SHE'S STELLAR

COPPER
DREAM

SEE YOU IN
MY DREAMS

SHOOTING
STAR

SPRINKLE OF
TWINKLE

WALKING ON
STARDUST

A STARRY
SIGHT

DANCING &
ROMANCING

GILDED
IN GOLD

A KISS IN
THE DARK

LET THERE BE
MOONLIGHT



12-PIECE DISPLAY



16-PIECE DISPLAY



6-PIECE DISPLAY


gelish.com | MorganTaylorLacquer.com
 714. 773. 9758 • Made in the USA


**MORGAN
TAYLOR**
 Professional Nail Lacquer



FAVORITE EIGHT



NAIL ART KIT



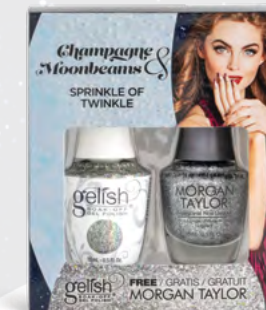
REACT TRIO WITH BAG



DIP COLORS



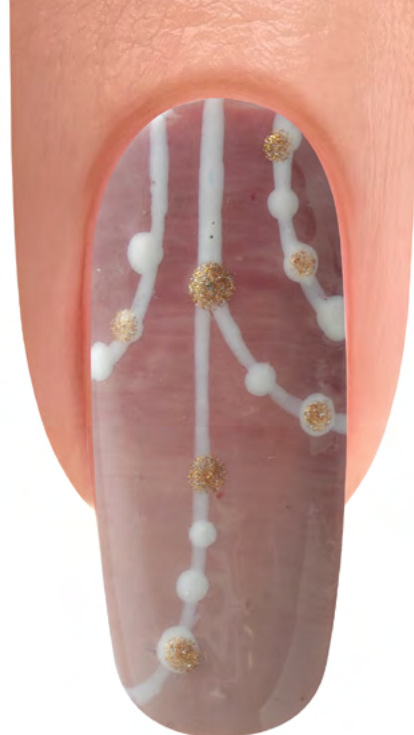
MINI 4 PACKS



TWO OF A KINDS



STEP 1 After completing your Gelish nail prep, apply a thin coat of DANCING & ROMANCING onto the entire nail making sure to cap the free edge. Cure for 30 seconds in the 18G LED Light. Repeat for full coverage.



STEP 2 Using a Sponge and FROM DUSK TIL DAWN, blend to half of the nail to create a fade. Cure for 30 seconds.



STEP 3 Using a Mini Striper Brush and ARCTIC FREEZE, create several curved lines.

An Ombre DREAM



STEP 4 With a Dotting Tool, add a variety of small sized dots along the curved lines.



STEP 5 Using the Dotting Tool and GILDED IN GOLD, add a few gold dots over the white dots. Cure for 30 seconds. Apply TOP IT OFF to the entire nail making sure to cap the free edge. Cure for 30 seconds. With NAIL SURFACE CLEANSE and WIPE IT OFF lint-free wipes, cleanse the inhibition layer of the nail. Finish your look by massaging NOURISH Cuticle Oil into the skin surrounding the nail plate. Enjoy your finished look.



DANCING & ROMANCING

FROM DUSK TIL DAWN

ARCTIC FREEZE

GILDED IN GOLD



STEP 1 Apply a thin coat of A KISS IN THE DARK onto the entire nail making sure to cap the free edge. Repeat for full coverage.



STEP 2 With a Mini Striper Brush and ARCTIC FREEZE, paint a small crescent moon near the sidewall.

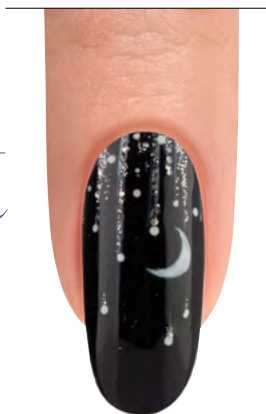


STEP 3 Paint vertical jagged lines near the cuticle and crescent moon.



STEP 4 With SPRINKLE OF TWINKLE and the Mini Striper Brush, paint over the jagged lines.

Luminescent CRESCENT



STEP 5 Add dots on the lines using a Dotting Tool and Arctic Freeze. Finish with NEED FOR SPEED top coat.



SPRINKLE OF TWINKLE

A KISS IN THE DARK

ARCTIC FREEZE

Hybrid Electric FILE BITS

The Gelish Go File Bits have up to 3 times the sharpness and corrosion resistance compared to most of the bits on the market.



 <p>LOXO MANDREL (3/32" Bit)</p> <p>Made of stainless steel with built-in anti-slip technology. This bit is versatile as it fits sanding bands with a wide range of grits. The bit can be used on the natural nail and enhancements. The main features are to assist with prepping of the natural nail, shortening nail enhancements and redefining the C-Curve. Also commonly used for pedicures and stubborn calluses.</p>	 <p>CUTICLE CLEANER BALL (3/32" Bit)</p> <p>A small, round shape with the ability to fit around all cuticle types. The main feature of this bit is to remove skin around the cuticle to complete the prep process.</p>
 <p>UNDER NAIL CLEAN SMALL (3/32" Bit)</p> <p>The Gelish Under Nail Cleaner is designed to safely clean underneath the natural nail or enhancements. The straight shank with a tapered tip allows for ease with cleaning in tight areas.</p>	 <p>FINE LARGE BARREL (3/32" Bit)</p> <p>The safety edge reduces the chances of cutting a client and gives assurance when going around the cuticle area. With this bit being a carbide fine cut, it's great for shortening and shaping enhancements such as Gelish Structure Gel, Hard Gel and PolyGel. The large barrel quickly removes Gelish soak-off gel polish and levels bumpy application.</p>
 <p>COARSE LARGE BARREL (3/32" Bit)</p> <p>The safety edge reduces the chances of cutting a client and gives the assurance when going around the cuticle area. With a coarse cut carbide, this bit shortens and shapes nail enhancements such as Gelish Dip or ProHesion. The large barrel also quickly removes Gelish soak-off gel polish and levels bumpy application.</p>	 <p>SUPER 2X COARSE LARGE BARREL (3/32" Bit)</p> <p>The safety edge reduces the chances of cutting a client and gives assurance when going around the cuticle area. With a 2X coarse cut carbide, this bit shortens and shapes nail enhancements such as Gelish Dip or ProHesion. The large barrel also quickly removes Gelish soak-off gel polish and levels bumpy application.</p>
 <p>MEDIUM SMOOTH ROUND TOP LARGE BARREL (3/32" Bit)</p> <p>The safety round top reduces the chances of cutting a client and gives assurance when going around the cuticle area. With a medium cut carbide, this bit choice shortens and shapes nail enhancements such as Gelish Structure Gel, Hard Gel and PolyGel. The medium barrel also quickly removes Gelish soak-off gel polish and levels bumpy application.</p>	 <p>SUPER 2X COARSE SMOOTH ROUND TOP LARGE BARREL (3/32" Bit)</p> <p>The safety round top reduces the chances of cutting a client and gives assurance when going around the cuticle area. With a super 2X coarse cut carbide, this bit shortens and shapes nail enhancements such as Gelish Dip or ProHesion. The large barrel also quickly removes Gelish soak-off gel polish and levels bumpy application.</p>
 <p>EXTRA COARSE VOLCANO (3/32" Bit)</p> <p>The round/tapered shape reduces the chances of cutting a client and gives the nail tech assurance when going around the cuticle area. With a coarse cut carbide, this bit shortens and shapes nail enhancements such as Gelish Dip or ProHesion. The bit has a built-in dust shield and quickly removes Gelish soak-off gel polish.</p>	 <p>1168021 - EXTRA COARSE VOLCANO RADIUS (3/32" Bit)</p> <p>The safety round/tapered shape reduces the chances of cutting a client and gives assurance when going around the cuticle area. With a coarse cut carbide, this bit shortens and shapes nail enhancements such as Gelish Dip or ProHesion. The bit has a built-in dust shield and quickly removes Gelish soak-off gel polish.</p>
 <p>FINE 3-IN-1 SAFETY EDGE ANGLED AND TAPERED (3/32" Bit)</p> <p>With a fine cut carbide, this bit is great for shortening and shaping nail enhancements such as Gelish Structure Gel, Hard Gel and PolyGel. This bit also quickly removes Gelish soak-off gel polish.</p>	 <p>COARSE 3-IN-1 SAFETY EDGE ANGLED AND TAPERED (3/32" Bit)</p> <p>The safety edge reduces the chances of cutting a client and gives assurance when going around the cuticle area. With a coarse cut carbide, this bit shortens and shapes nail enhancements such as Gelish Dip or ProHesion. This bit also quickly removes Gelish soak-off gel polish.</p>

IT'S AS EASY AS 1,2,3!

Your favorite Gelish® and
Morgan Taylor® shades now come
in, not two, but three formulas.



COLOR SHOWN:
SAMURAI



gelish.com | morgantaylorlacquer.com

714. 773. 9758 • Made in the USA • ©2019 Nail Alliance, LLC.